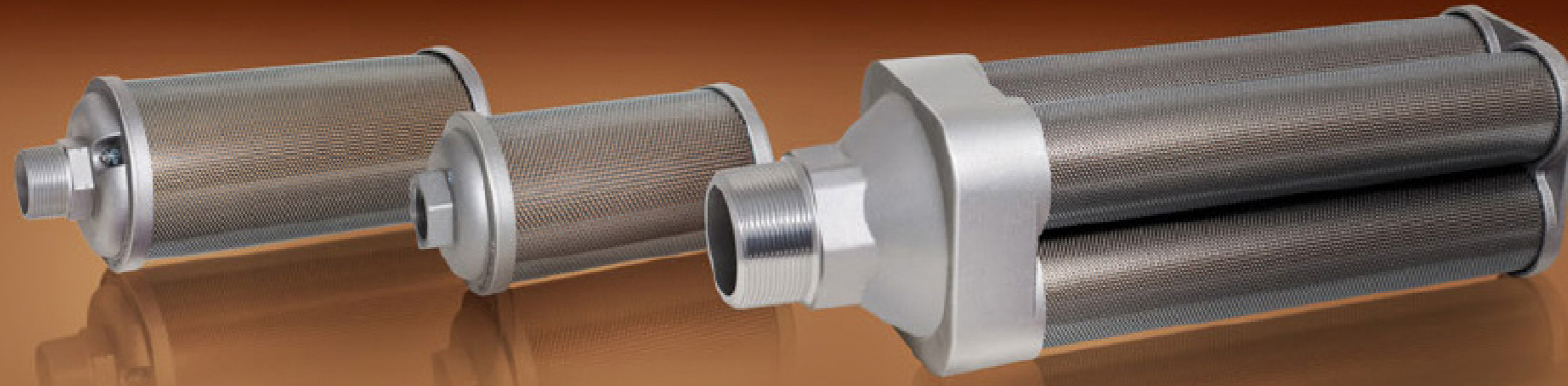
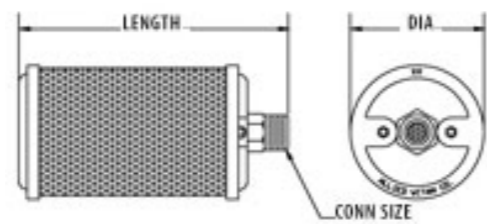


AIR EXHAUST MUFFLER

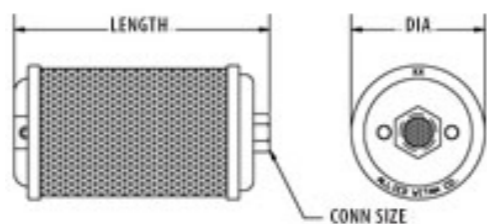


AIR EXHAUST MUFFLER

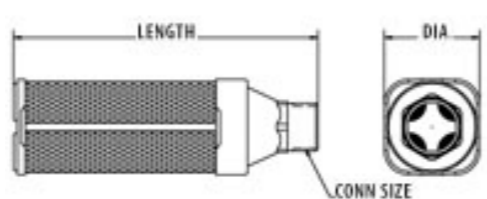
Single Chamber-Male
1/8"- 2"



Single Chamber-Female
1/8"- 2"



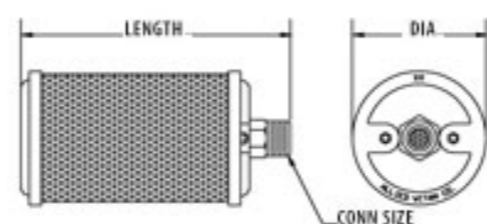
Multi-Chamber-Male
3"- 6"



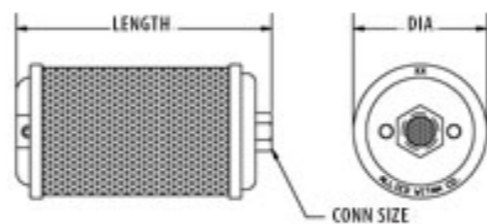
"THE ORIGINAL"... PROVIDES UP TO 85% PERCEIVED NOISE REDUCTION AND 94% FLOW FACTOR

- Expertly reduces Exponentially Perceived Noise (EPNdB) without impeding equipment performance
- Designed to take explosive air exhaust noise discharged from valve exhaust ports and muffle it with optimized Constant Velocity (CV) flow factor
- Exhaust air flows softly to atmosphere free of noise, oil fog, and other contaminants - helping to maintain a clean, comfortable and productive work environment
- Features a unique obstruction-free expansion chamber, with corrosion-resistant aluminum end covers, zinc-plated steel components and a cellulose fiber element
- Recommended for general purpose air exhaust applications for pressures up to 125 psi (8.6 Bar)

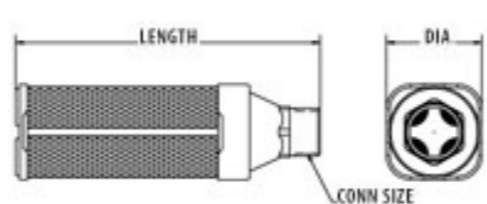
Single Chamber-Male
1/8"- 2"



Single Chamber-Female
1/8"- 2"



Multi-Chamber-Male
3"- 6"



Conn Size	Connection Thread Types						Dimensions			Replacement Element
	Male NPT		Female NPS		Male BSPT		Diameter	Length		
	Model Type	Item Number	Model Type	Item Number	Model Type	Item Number		Male	Female	
Single Chamber										
1/8	M01	0111001	N01	0211001	B01	0121001	1.84	3.12	2.81	0911001
1/4	M02	0111002	N02	0211002	B02	0121002	1.84	4.37	4.00	0911002
3/8	M00	0111000	N00	0211000	B00	0121000	2.59	5.12	4.56	0911000
1/2	M05	0111005	N05	0211005	B05	0121005	3.15	6.00	5.50	0911005
3/4	M07	0111007	N07	0211007	B07	0121007	3.40	7.18	6.68	0911007
1	M10	0111010	N10	0211010	B10	0121010	3.90	8.75	7.92	0911010
1-1/4	M12	0111012	N12	0211012	B12	0121012	3.90	8.75	8.00	0911012
1-1/2	M15	0111015	N15	0211015	B15	0121015	5.25	13.56	12.50	0911015
2	M20	0111020	N20	0211020	B20	0121020	5.25	18.87	17.75	0911020
Multi Chamber										
3	M30	0111030	-	-	B30	012103	7.00	22.93	-	0911030
4	M40	0111040	-	-	B40	0121040	8.00	23.56	-	0911040
6	M60	0111060	-	-	B60	0121060	11.00	30.93	-	0911060